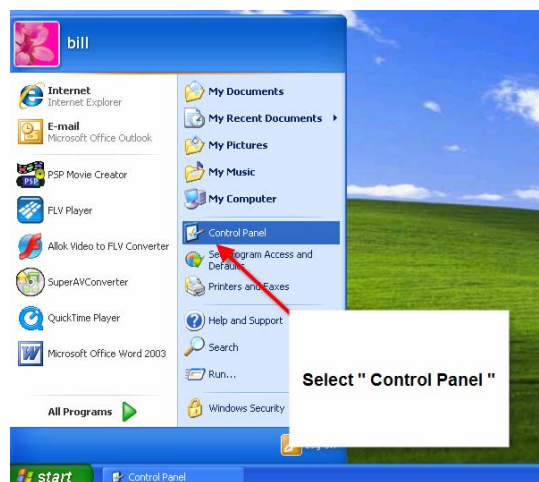
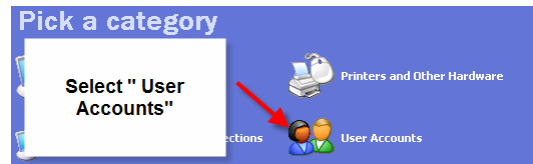


Adding User Accounts on XP

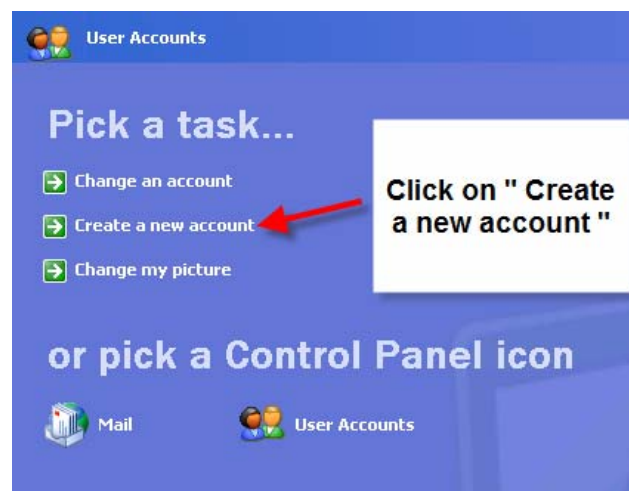
Adding User Accounts on XP



Adding User Accounts on XP



Adding User Accounts on XP



Adding User Accounts on XP

Name the new account

Type a name for the new account:

User

This name will appear on the [Welcome screen](#) and on the [Start menu](#).

Step 1
Give a name to the
User account

Step 2
Click
" Next "

Next >

Cancel

Adding User Accounts on XP

Pick an account type

Computer administrator Limited

With a limited account, you can:

- Change or remove your password
- Change your picture, theme, and other desktop settings
- View files you created
- View files in the Shared Documents folder

Users with limited accounts cannot always install programs. Depending on the program, a user might need administrator privileges to install it.

Also, programs designed prior to Windows XP or Windows 2000 might not work properly with limited accounts. For best results, choose programs bearing the Designed for Windows XP logo, or, to run older programs, choose the "computer administrator" account type.

< Back

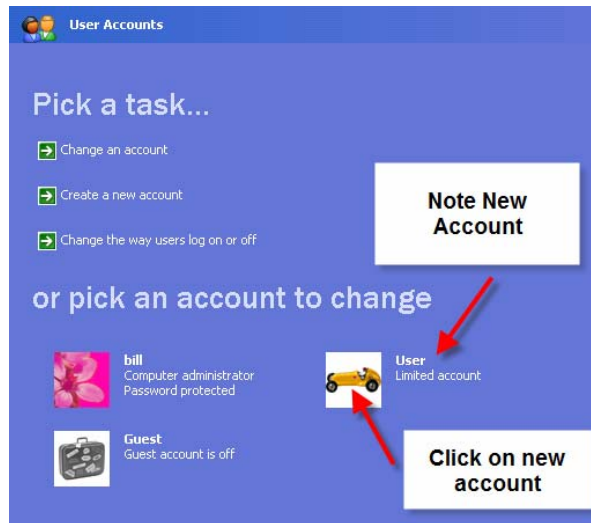
Create Account

Cancel

Note
Highlighted
Item

2

Adding User Accounts on XP



Adding User Accounts on XP

What do you want to change about User's account?

- Change the name
 - Create a password
 - Change the picture
 - Change the account type
 - Delete the account
- User**
Limited account

Choose the password for the account

Adding User Accounts on XP

Create a password for User's account

You are creating a password for User. **If you do this, User will lose all EFS-encrypted files, personal certificates, and stored passwords for Web sites or network resources.**

To avoid losing data in the future, ask User to make a password reset floppy disk.

Type a new password:

Type the new password again to confirm:

If the password contains capital letters, they must be typed the same way every time.

Type a word or phrase to use as a [password hint](#):

The password hint will be visible to everyone who uses this computer.

Click here when done

Create Password Cancel

Add the password you want for the account

Account setup completed

