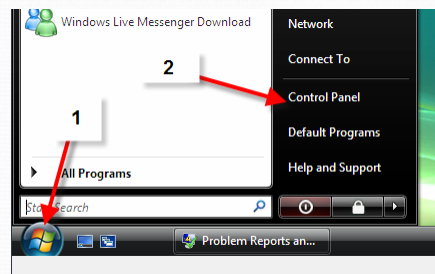
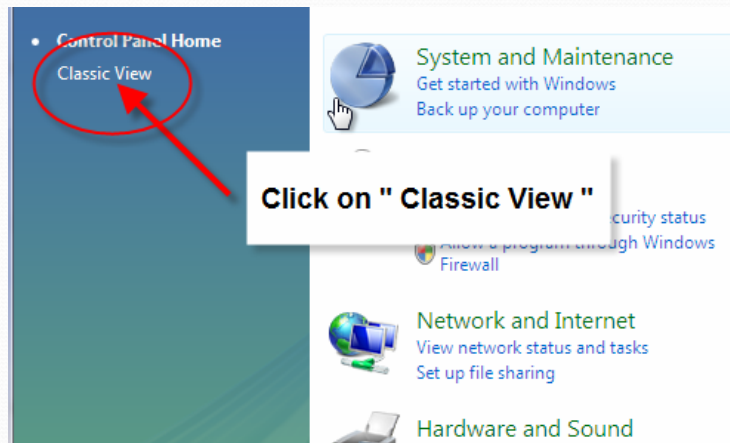


Adding User Account on Vista and Windows 7 and Windows 7

Adding User Account on Vista and Windows 7 and Windows 7



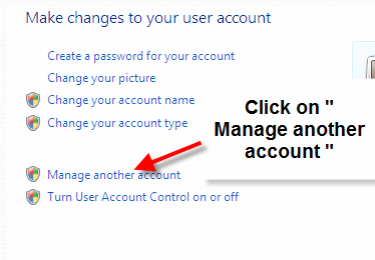
Adding User Account on Vista and Windows 7



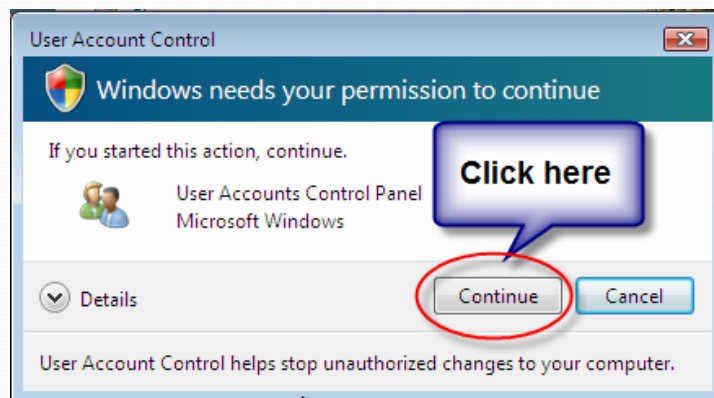
Adding User Account on Vista and Windows 7



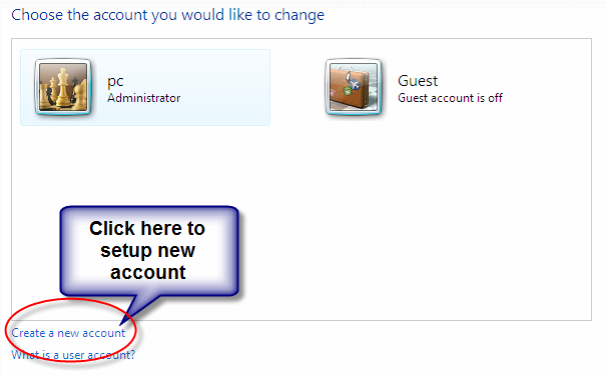
Adding User Account on Vista and Windows 7



Adding User Account on Vista and Windows 7



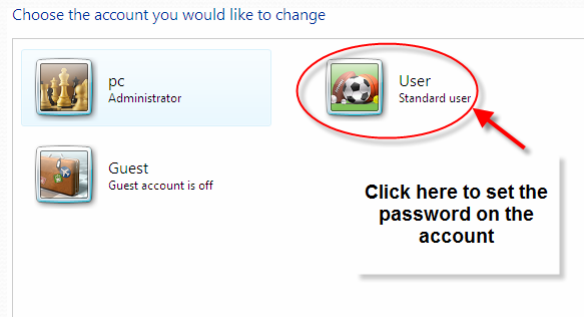
Adding User Account on Vista and Windows 7



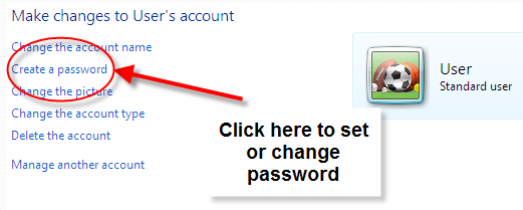
Adding User Account on Vista and Windows 7



Adding User Account on Vista and Windows 7



Adding User Account on Vista and Windows 7



Adding User Account on Vista and Windows 7

Create a password for User's account



User
Standard user

You are creating a password for User.

If you do this, User will lose all EFS-encrypted files, personal certificates and stored passwords for Web sites or network resources.

To avoid losing data in the future, ask User to make a password reset floppy disk.

New password

Confirm new password

Create your password and confirm it

If the password contains capital letters, they must be typed the same way every time.

[How to create a strong password](#)

Type a password hint

The password hint will be visible to everyone who uses this computer.

What is a password hint?

Click here when done

Create password

Cancel

Account setup completed